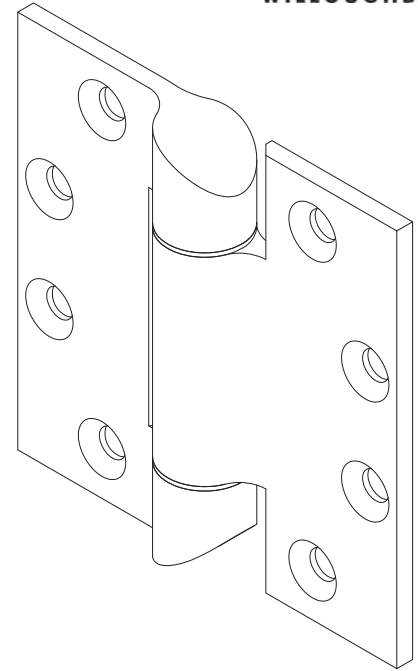
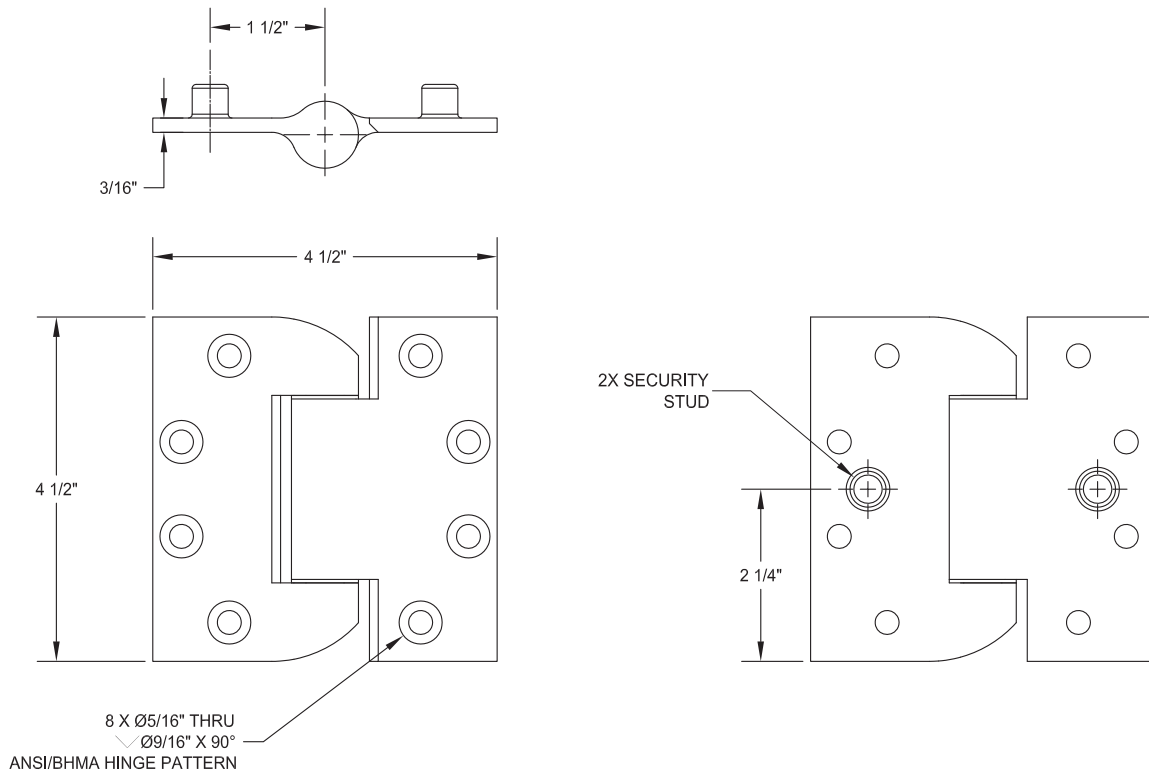


WSH4545 Willoughby Stainless Steel Full Mortise Security Hinge



WSH4545 Specifications:

- Full Mortise w/ Security Studs
- Cast 304 Stainless Steel
- Brushed Stainless Finish
- 4-1/2" x 4-1/2" x 3/16"
- ANSI/BHMA A156.7 Hinge Pattern
- Anti-Friction Wear Resistant Bearings
- Rated For 300lb Door w/ 3 Hinges per ASTM F1758-03
- 1/4-20 Flat Head Security Screws Provided
- 3rd Party Certified to ASTM F1758-03 Grade 1 Detention Hinge



WARNING: Cancer and Reproductive Harm

- www.P65Warnings.ca.gov

visit our website at www.willoughby-ind.com
5105 West 78th Street • Indianapolis, IN. 46268
(317) 875-0830 • Fax: (317) 875-0837 • (800) 428-4065