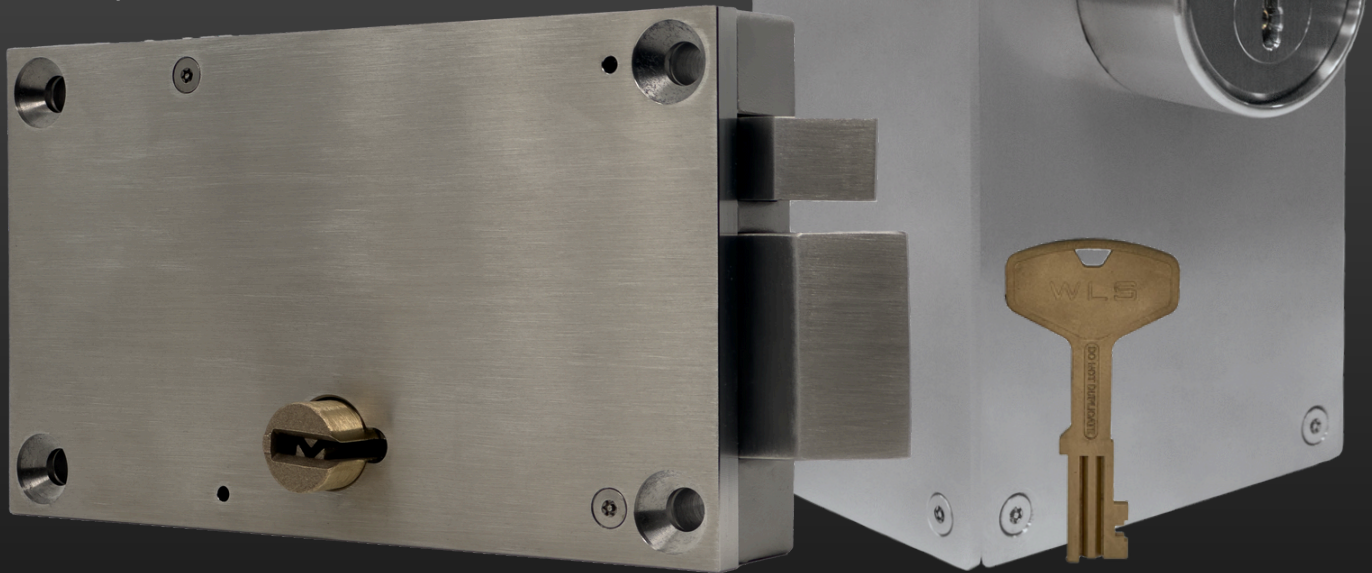




Your New Trusted Partner for High-Quality Stainless Steel Detention Locks



Electromechanical

Mechanical

Accessories

Hardware

Table of Contents

- 3.) WLS-1520 Stainless Steel Electromechanical Detention Lock**
- 4.) WLS-1710 Stainless Steel Food Pass Deadbolt Lock**
- 5.) WLS-1717 Stainless Steel Food Pass Lock**
- 6.) WLS-1770 Stainless Steel Mechanical Automatic Deadlatch Lock**
- 7.) WLS-1780 Stainless Steel Deadbolt Perimeter Lock**
- 8.) Paracentric and Mogul Keys**
- 9.) TFP-852330 Food Pass Hinge, Bolted and Welded Variants**
- 10.) WSH-4545 Stainless Steel Full Mortise Security Door Hinge**
- 11.) WPP-0310 Door Push/ Pull**
- 12.) WDP-0108 Door Pull**
- 13.) WCP-0209 Ligature Resistant Channel Door Pull**

WLS-1520

Stainless Steel Electomechanical Detention Lock

The WLS-1520 Series lock is used in high security applications including medium and maximum inmate confinement, Governmental and Industrial buildings.

The WLS-1520 series can be used with standard or mogul type cylinders. The WLS-1520 is normally jamb mounted in a steel door frame with a recommended minimum 14 gauge construction.



WLS-1710

Stainless Steel Food Pass Deadbolt Lock

The WLS-1710 series Deadbolt lock is used in high security applications for food pass doors observation panels, and other small doors in Governmental and Industrial buildings. The WLS-1710 series uses a paracentric cylinder and key.

The WLS-1710 is not recommended as the primary means of securing a full door or when dead latching is a requirement.



WLS-1717

Stainless Steel Food Pass Lock

The WLS-1717 series lock is used in high security applications for food pass doors, observation panels and other small doors in Governmental and Industrial buildings. The WLS-1717 series uses a paracentric cylinder and key.

The WLS-1717 is not recommended as a primary means of securing a full door or when dead latching is a requirement.



WLS-1770

Stainless Steel Mechanical Automatic Deadlatch Lock

The WLS-1770 series deadlatch is used in high security applications for slam closing and automatic deadlocking in high priority Governmental and Industrial buildings. The WLS-1770 uses a paracentric cylinder and key.

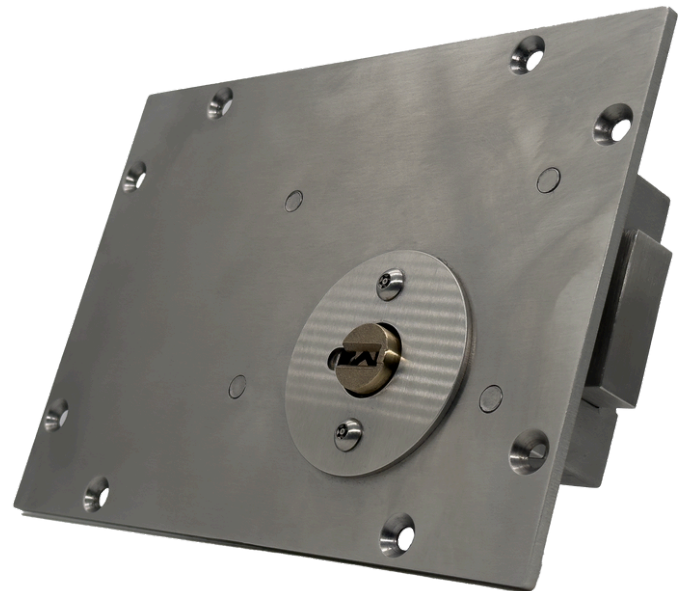
The WLS-1770 is not recommended as the primary means of securing inmate living areas as a requirement.



WLS-1780

Stainless Steel Deadbolt Perimeter Lock

The WLS-1780 series lock is used in high security applications for perimeter doors in Governmental and Industrial buildings. The WLS-1780 series uses a paracentric cylinder and key.



Keys

Mogul and Paracentric Keys

Willoughby Locking Systems keys are made of hardened bronze for durability.

Keys are custom made to requested key code.



TFP-852330

Titan Food Pass Hinge

Titan Steel Door's Steel Food Pass Hinge is specifically engineered for prison environments. This hinge is offered in both bolted (TBH-852330) and welded (TWB-852330) configurations.



WSH-4545

Stainless Steel Full Mortise Security Door Hinge

Made of 304 stainless steel with a brushed finish, the WSH-4545 features security studs, anti-friction bearings and is rated for 300 lb doors. Certified to ASTM F1758-03 Grade 1.

Also available with Electronic Pass Through Option (WSH-4545E).



WPP-0310

Door Push/Pull

The WPP-0310 is crafted from durable 11 ga. 304 Stainless Steel with a Brushed Finish. Measuring at 10-1/4" x 3-1/2", this push/pull set comes complete with 1/4-20 Flat Head Security Screws. Perfect for prison and jail door applications, it offers both durability and functionality in one sleek package.



WDP-0108

Door Pull

The WDP-0108 is made of 304 Stainless Steel with a brushed finish. Measuring in at 9" long and 2-3/17" Height/Projection. 3/8-16 Oval Head Security Screws provided.



WCP-0209

Ligature Resistant Channel Door Pull

The ligature resistant channel door pull, WCP-0209, is made of 7 ga. Stainless Steel with a 9" length x 2" height/ projection. 3/8-16 Oval Head Security Screws are provided.

