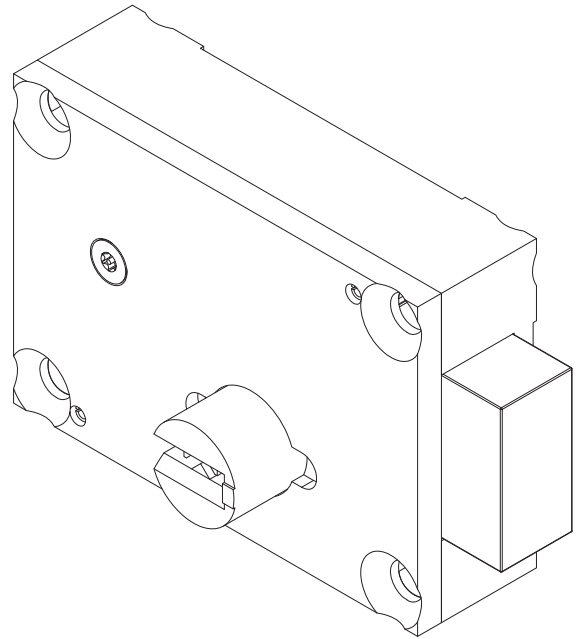


Willoughby Locking Systems



WLS-1710 Stainless Steel Food Pass Deadbolt Lock



Recommended Specifications

The WLS-1710 series deadbolt lock is used in high security applications for food pass doors, observation panels and other small doors in Governmental and Industrial buildings. The WLS-1710 series uses a paracentric cylinder and key.

The WLS-1710 is not recommended as the a primary means of securing a full door or when dead latching is a requirement.

Standard lock shall include:

- High security and impact resistant
- 5/8" bolt throw
- Deadbolt size is 1-1/2" x 3/4"
- Lock case, cover and latch are constructed from cast stainless steel utilizing hardened brass key, cylinder and tumblers
- Lever tumblers are designed with 'anti-pick' notches for both the locked and unlocked positions
- Key-way depths are designed to impede of 'picking' of locks
- Key is made of bronze alloy and machined to fit smoothly into lock (sold separately)
- Lock can be Surface Mounted with 4 security screws or Hollow Metal Flush Mounted with 7ga. Mounting Plate and 6 security screws (hardware included with lock)

To specify fixture and accessories, use the Model Number and Options page.

Example: To specify a stainless steel food pass deadbolt lock, keyed one side and left hand reverse.

Use the following Willoughby Model Number:
WLS-1710-K1-LHR



WARNING: Cancer and Reproductive Harm

- www.P65Warnings.ca.gov

visit our website at www.willoughbylocks.com
5105 West 78th Street • Indianapolis, IN. 46268
(317) 875-0830 • Fax: (317) 875-0837 • (800) 428-4065



MADE IN THE U.S.A.

MODEL NUMBER AND OPTIONS:

1.) Model Number:

- WLS-1710 Stainless Steel Food Pass Deadbolt Lock

5) Mounting:

- HM Flush Mount 7ga. Stainless Steel Plate for Hollow Metal Doors
- SM Surface Mount

2) Keyed:

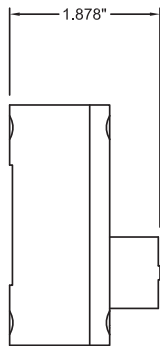
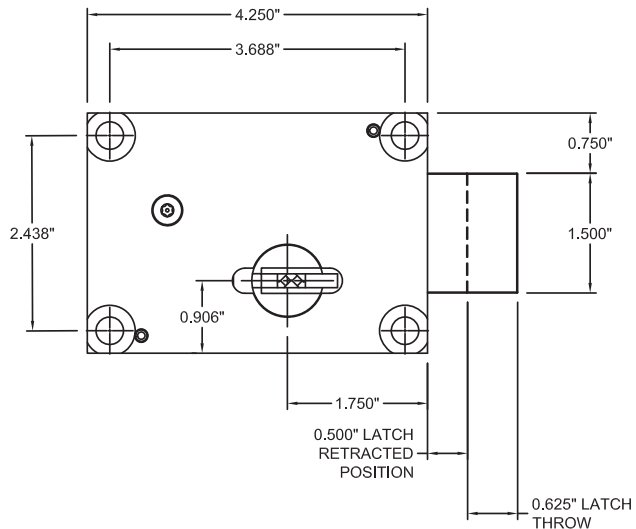
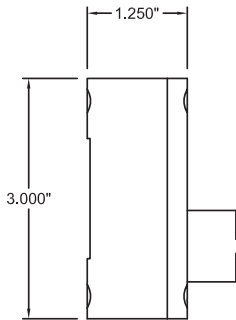
- K1 Keyed One Side
- K2 Keyed Both Sides
- Other _____

3) Lock Handing (See handing chart on next page):

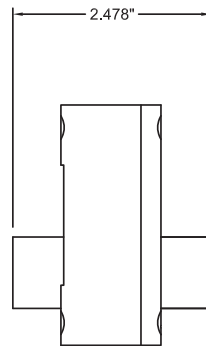
- LH Left Hand Lock (In-swing Door)
- RH Right Hand Lock (In-swing Door)
- LHR Left Hand Reverse Lock
- RHR Right Hand Reverse Lock

4) Escutcheon:

- EC1 1-Way Escutcheon
- EC2 2-Way Escutcheon



K1



K2

DRAWINGS ARE FOR REFERENCE ONLY, CONTACT FACTORY TO VERIFY DIMENSIONS

WILLOUGHBY RESERVES THE RIGHT TO MAKE CHANGES IN DESIGN AND DIMENSIONS WITHOUT FORMAL NOTICE AND WITHOUT INCURRING OBLIGATION.

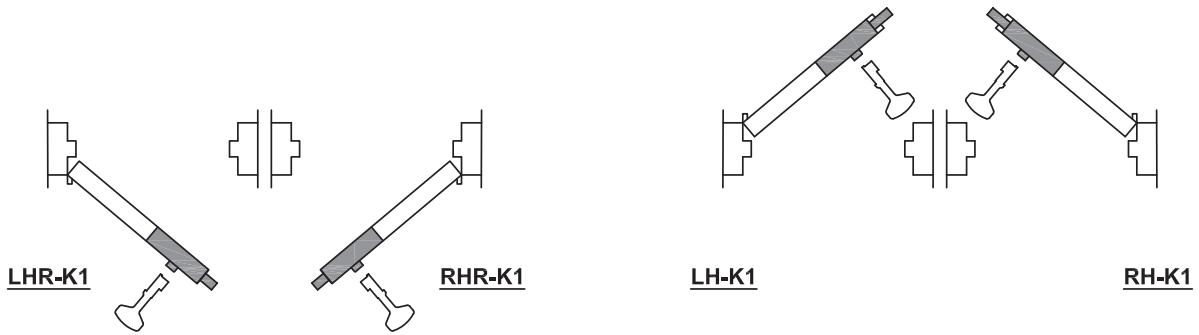
visit our website at www.willoughbylocks.com
 5105 West 78th Street • Indianapolis, IN. 46268
 (317) 875-0830 • Fax: (317) 875-0837 • (800) 428-4065



MADE IN THE U.S.A.

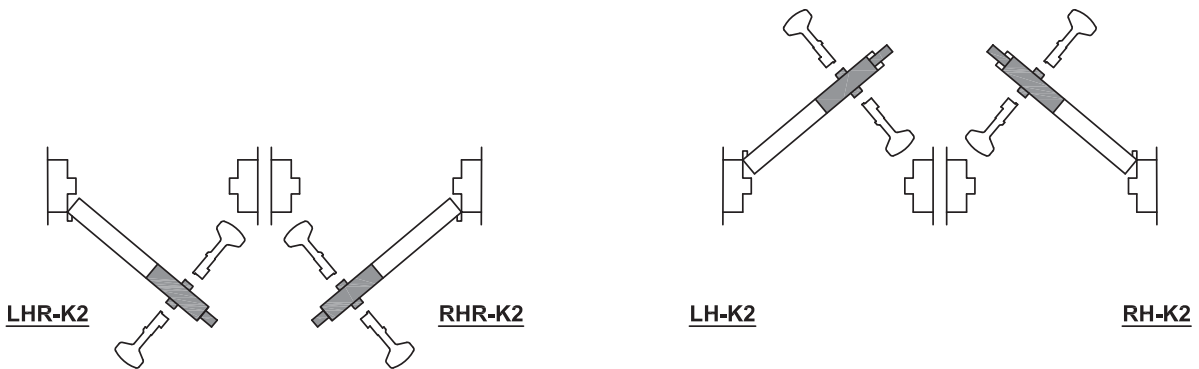
ADDITIONAL INFORMATION:

LOCK HANDING CHART



KEYED K1 HINGED SIDE
HOLLOW METAL MOUNTING PLATE
(FOR OUT-SWING DOORS)

KEYED K1 STOP SIDE
HOLLOW METAL MOUNTING PLATE
(FOR IN-SWING DOORS)



KEYED K2
HOLLOW METAL MOUNTING PLATE
(FOR OUT-SWING DOORS)

KEYED K2
HOLLOW METAL MOUNTING PLATE
(FOR IN-SWING DOORS)

visit our website at www.willoughbylocks.com
5105 West 78th Street • Indianapolis, IN. 46268
(317) 875-0830 • Fax: (317) 875-0837 • (800) 428-4065



MADE IN THE U.S.A.